



SOLID
&

SHAPE

DESSO

STUDIO
STEFAN

SCHOLTEN

 Tarkett



Conventional sample books with physical fabric swatches are not in line with our aims for sustainability. Over time, as collections change or are no longer available, sample books go out of date and often end up binned.

Stefan Scholten: "In the spirit of our first presentation book, we opted for this magazine-like inspiration book. It contains background information on the process and Tarkett's ambitious Cradle to Cradle philosophy. I believe this format has a longer shelf life."

SOLID

&

SHAPE

DESSO

STUDIO

STEFAN SCHOLTEN

Over the past twenty years, Stefan Scholten has become one of the defining voices in world-renowned Dutch design. The prestigious design magazine *Wallpaper** recently voted his work 'Best Design of the Year'. He has managed his own design agency since 1995. The Amsterdam-based studio designs for a variety of well-respected brands, such as HAY, Paola Lenti, City of Amsterdam, DESSO, Maharam, Kvadrat and Gelderland.

Scholten has many years of experience in designing furniture, textiles and, since October 2021, he has also been the new Creative Director for wallpaper producer BN Walls. He is known for his reduced shapes and minimalist design style combined with a unique use of colour. His designs are functional and applicable, but always expressive. Scholten's approach is also known as the atelier-method-of-working. During the design process, he thinks with his hands as much as possible. He will keep on sketching, drawing and mixing colours until an original and new design emerges. Before an item of furniture, wallpaper, textile or home accessory goes into large-scale production, the studio first works on a scale or life-size model, typically using basic materials, such as paper or cardboard.



Stefan Scholten



SOLID 2962, SHAPE 9027



In addition to designing the tiles, Studio Stefan Scholten also took the creative lead in compiling the content for this collection magazine. This included graphic design, art direction and styling in close collaboration with photographer Pim Top to give it an abstract image. By using mainly furniture and products designed by Studio Stefan Scholten and Scholten & Baijings, a glimpse is given into the world of the designer.

DESSO is a leading carpet brand with more than 85 years of experience in manufacturing high-end, innovative carpet solutions. DESSO is part of Tarkett, a world leader in flooring. Our carpet manufacturing facilities are located in Waalwijk, the Netherlands and Dendermonde, Belgium.

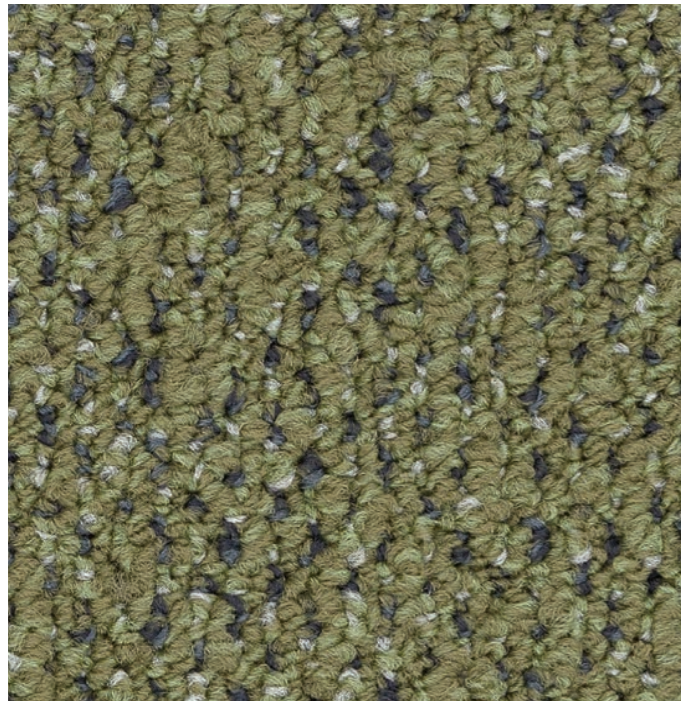
Through an innovation strategy, driven by the three pillars of Creativity, Functionality and Cradle to Cradle® design, we aim to deliver products which help to maximize people's health and wellbeing. With inventive patterns and an extensive offering of fresh colour palettes, DESSO carpet tiles create stunning and practical concepts for every space within a building.

At Tarkett, our closed-loop systems do away with linear take-make-waste models, ensuring that what goes around, comes around. For us, circularity is about the beauty of the used and reused materials that go into our products, the innovative manufacturing processes and the knowledge that we are actively cutting down on waste and greenhouse gas emissions.

We seek to bring added value to our collections through external collaborations like this one with Studio Stefan Scholten.

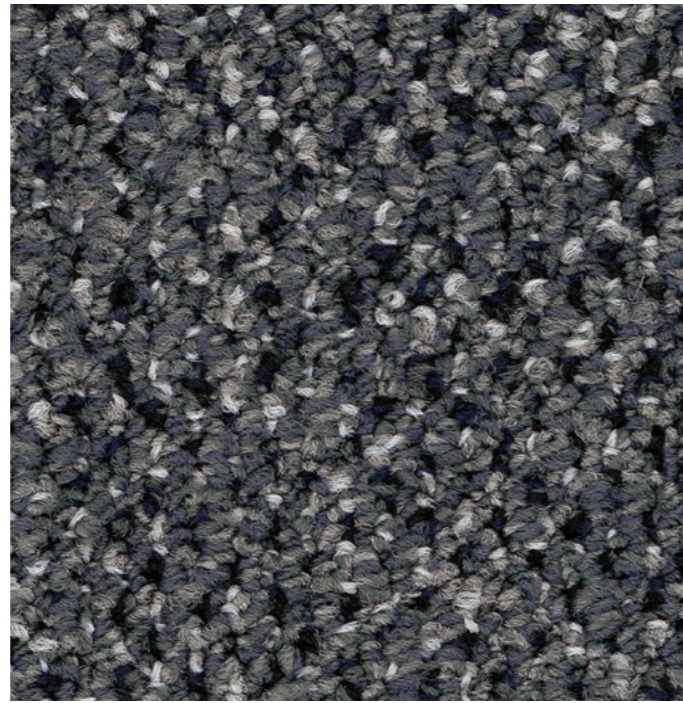


**“Studio Stefan Scholten is known for its refined use of colour and subtle sense of shape and materiality.”
— Ludwig Cammaert**



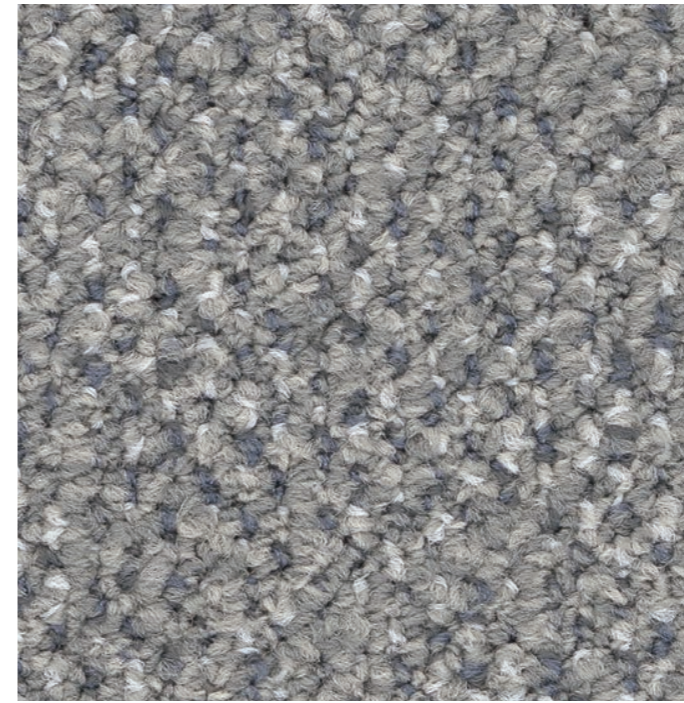
SOLID 7854
PAGE 34, 35, 50, 51

SHAPE 7854
PAGE 14



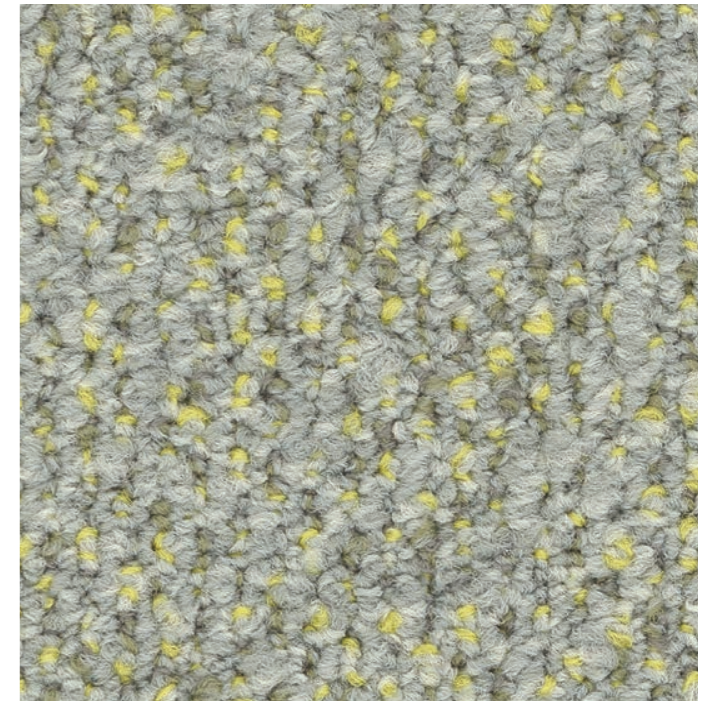
SOLID 9022
PAGE 49, 51

SHAPE 9022
PAGE 38



SOLID 9027
PAGE 48, 49, 51

SHAPE 9027
PAGE 05, 36, 37



SOLID 6324
PAGE 16, 25, 28, 33

SHAPE 6324
PAGE 25, 30



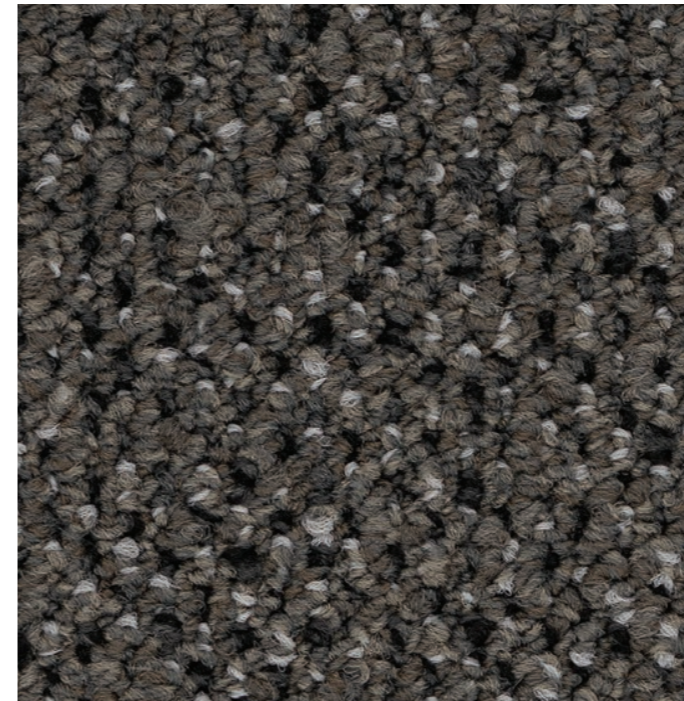
SOLID 5031
PAGE 11, 28, 29, 40

SHAPE 5031
PAGE 11, 42



SOLID 1321
PAGE 35, 43

SHAPE 1321
PAGE 14



SOLID 9094
PAGE 40, 42

SHAPE 9094
PAGE 45



SOLID 2962
PAGE 04, 05

SHAPE 2962
PAGE 38, 39, 47

Solid & Shape are a visual exploration of various recycling techniques. The general aesthetics associated with upcycled materials is one of turbid mixed colours and rhythms rather than sharp geometric patterns.

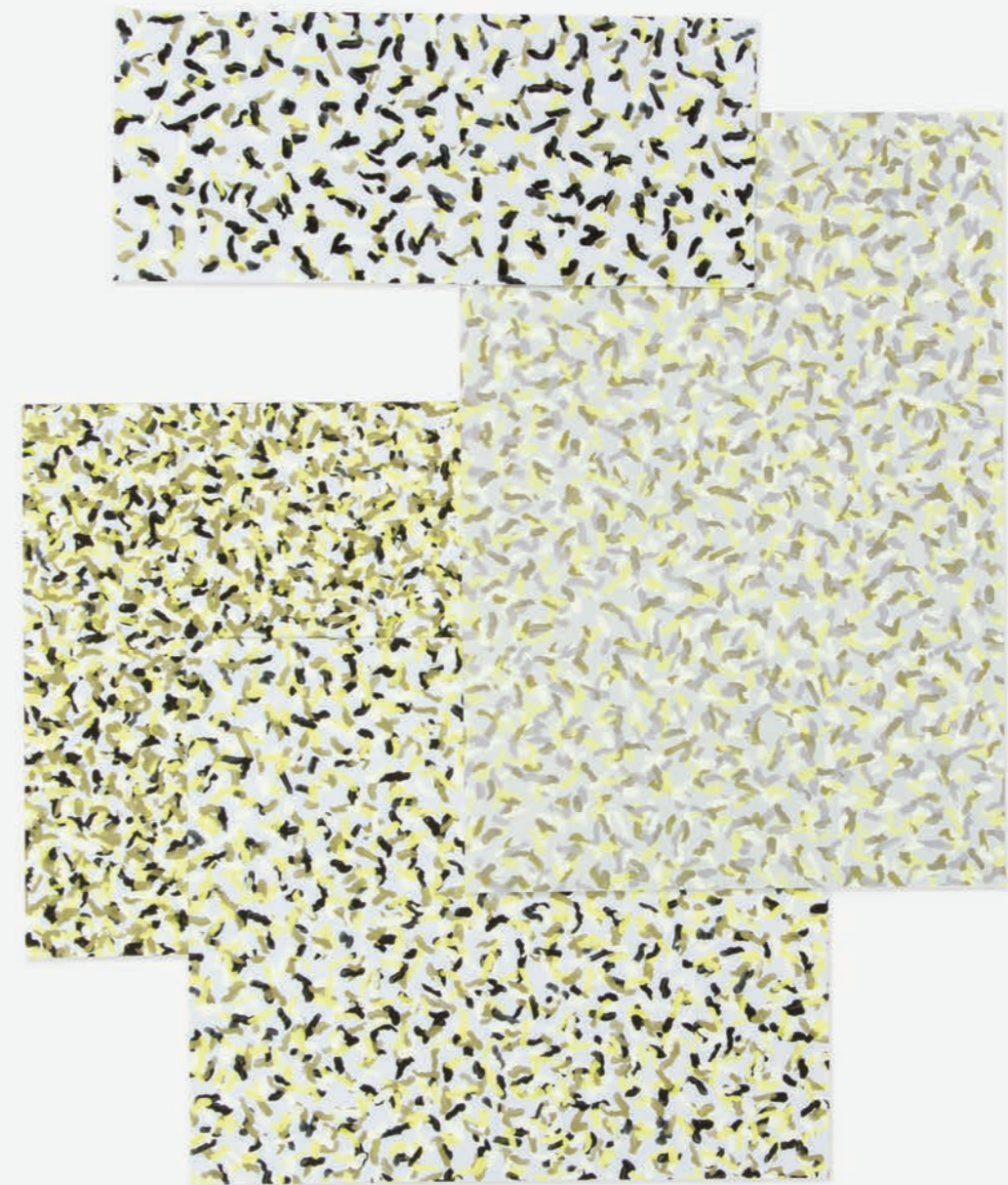
Stefan Scholten: “We wanted to play with blends of rough and smooth yarns and various pile heights, creating a raw and refined look at the same time. The definitive series was preceded by an intensive form research. In the end, a collection with two appearances emerged: **Solid** and **Shape**. Two designs, with eight colours each. By combining the qualities of **Solid** and **Shape**, the possibility of variation increases.”

Solid is a study of yarn combinations and colour combinations inspired by yarn fibres from the recycling process. This study resulted in an all-over design with a luxurious look. The different colours in the melange yarns give a surprisingly colourful impression when examined in detail.

Starting with the same process as for **Solid** – cutting yarn fibres, taking them apart and reconstituting them – Studio Stefan Scholten created a pattern based on organic shapes, like a collage of leftover shapes that create a new picture. By using the same melange yarns as in **Solid**, the two concepts complement one another.

The combination of **Solid** and **Shape** offers the possibility of working with zones. The matching colour palette allows you to make an appropriate and expressive statement on workplace floors.





“We studied the appearance of shredded material - ground, cut, sliced and granulated bits are the starting point for our designs. By layering and combining these fragments, new patterns are created.”
— Stefan Scholten



“No matter how you combine tiles, the colours and patterns always work together. That is the power of Shape. The forms blend organically into each other”
— Stefan Scholten

SHAPE 7854, SHAPE 1321



INSPIRED BY THE RECYCLING PROCESS OF TARKETT



SOLID 6324

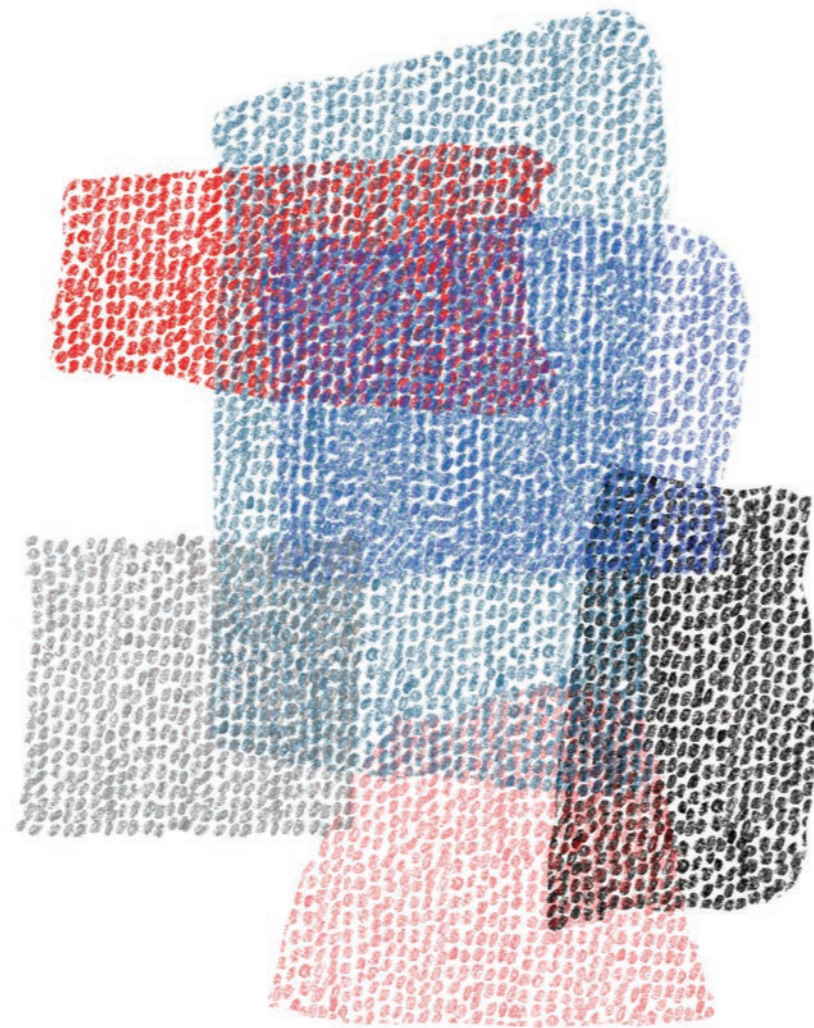


The ReStart take-back and recycling programme facilitates the processing of old flooring as a raw material for new flooring. Tarkett can separate the backing from the yarn and reuse it as backing for new DESSO carpet tiles. The yarns are reprocessed to produce new carpet yarns.

Stefan Scholten: "Our project was based on this process. I was very pleased to have this as a starting point. How do you translate Tarkett's Cradle to Cradle philosophy into a collection that visibly and tangibly reflects it? We wanted the carpet tiles themselves to reflect the fact that they are the result of upcycling, the clever processing of yarn waste." To use the recycled yarns, Studio Stefan Scholten put together a colour line from Tarkett's existing yarn bank.



Stefan Scholten: "We started by sorting fibres by colour: from light to dark, and from warm to cold. This created a melange, a blend of colours. We also started to zoom in on the threads, the filaments that produce a yarn, looking at their shape and ways to combine them to give a new look. The impressions that you collect in your head and as a rendering on paper must then be translated back into an image that the machine with its many needles can also understand."



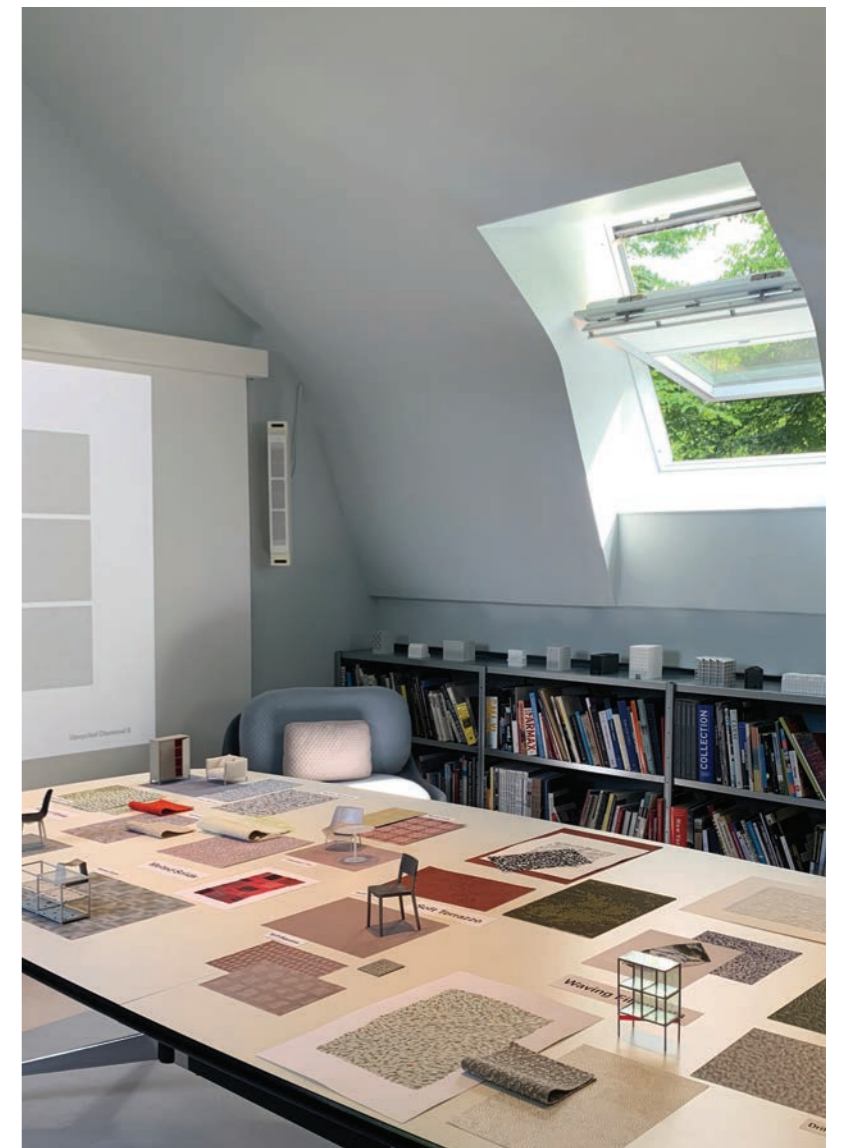
'Melted Cubes' → Shape

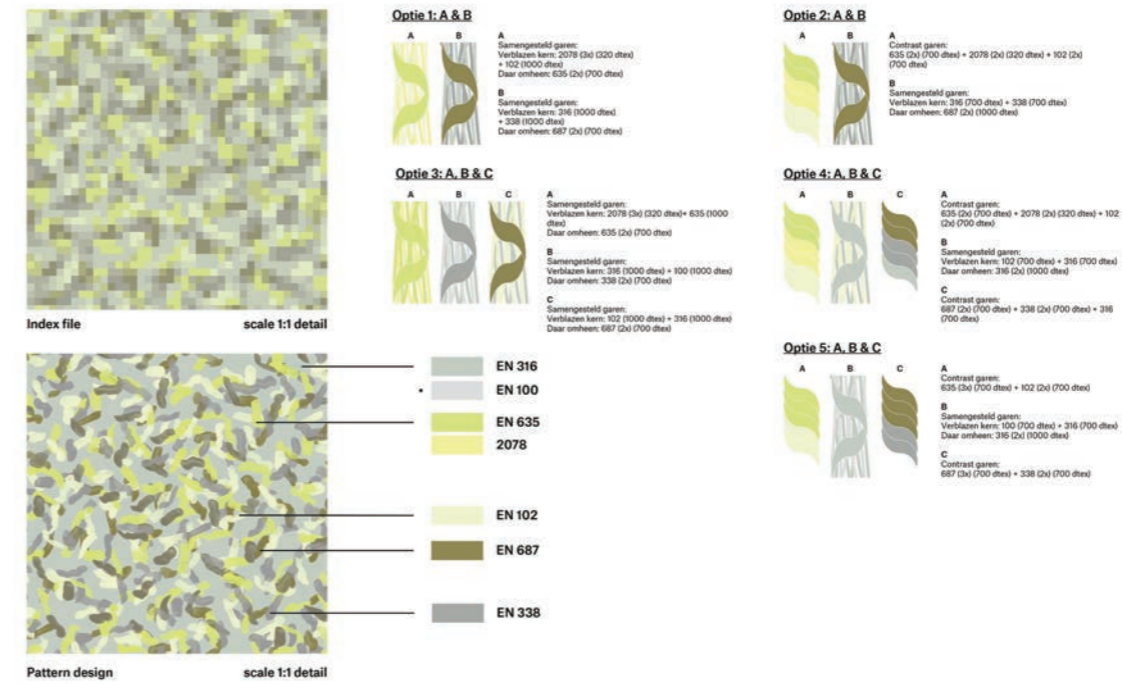


'Flaked Fibers' → Solid

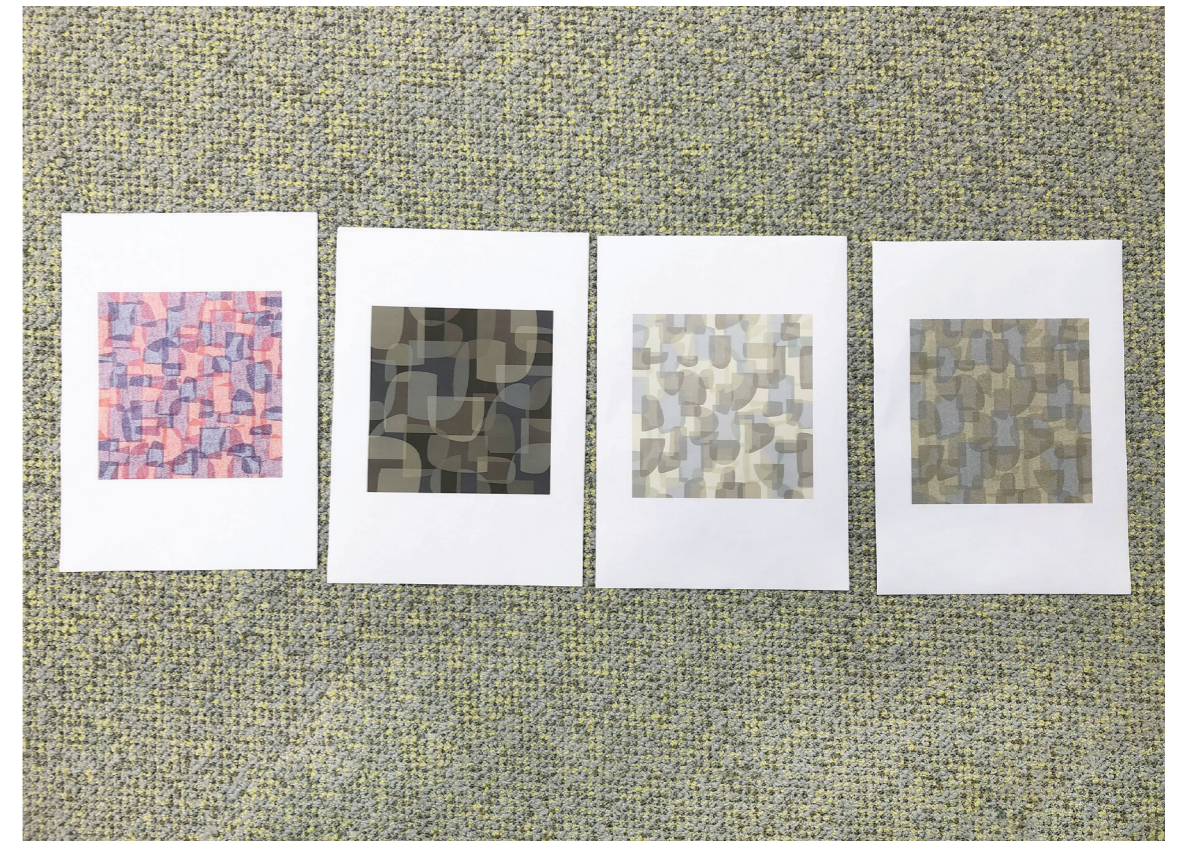
"Our image research mainly focused on shape and colour. How do you stay true to the upcycling principle and carry it through to the end result, the carpet tile?"
 — Stefan Scholten

The working title of the project was 'The Shredder Collection'. The final series was preceded by an intensive study of form. We continued with explorations that had imaginative names such as 'Flaked Fibers', 'Drifting Dots', 'Random Short Cuts' and 'Melted Cubes', to define the main route we wanted to take.

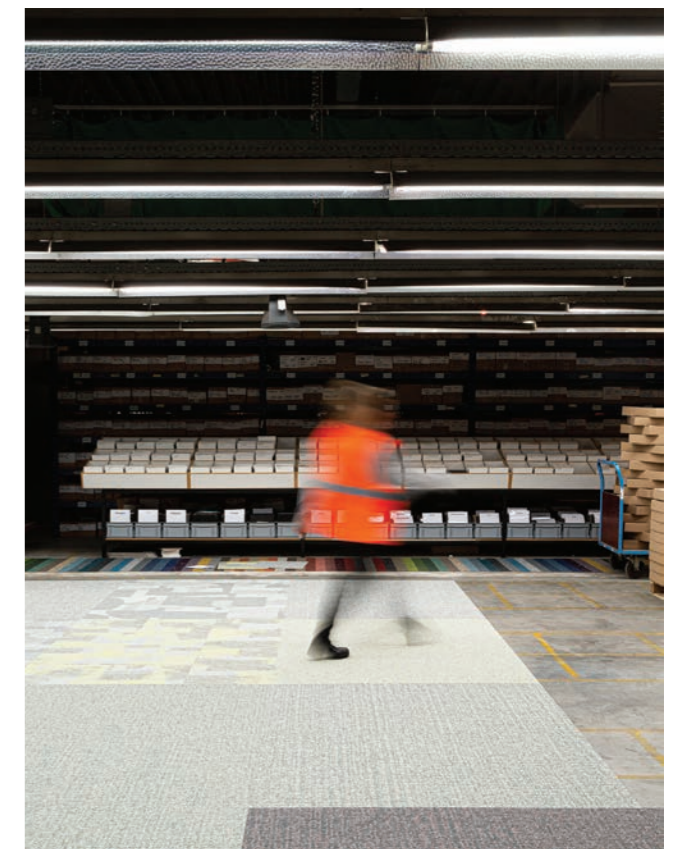




Stefan Scholten: "We twisted the original filament threads to create new shades. You can play with colour, pile height, and the number and combination of threads. The process of composition is a very delicate thing. By the end, it should all work together perfectly. Only then can you be sure of successfully converting a computer image into a combination that works in real life."



The aim was to develop a new colour image with warm, applicable, melange tones. This became four dark and four lighter colours, all with a fresh feel – deprecating the safe greys.



With various design concepts, we produced prototype swatches from which a selection was made for the test floors. Translating a manual swatch into an entire floor is a challenging process. Stefan Scholten: "No matter how straightforward a carpet tile may seem at first glance, the number of variables determining quality is huge. We made numerous test samples."

Ludwig Cammaert: "The cooperation with Studio Stefan Scholten is an example of how you can challenge and support each other. Stefan Scholten is known for a refined use of colour and subtle sense of form and materiality. When you add our in-depth carpet experience, you create the conditions for a collection with added value. Our research and development program goes way beyond just material innovations, such as Ecobase carpet tile backing and the application of recyclable yarns. You won't necessarily see all these developments in the product straightaway. The positive story behind the technology deserves a parallel in the design process. This is only possible if you bring the world of R&D and the world of design together. Studio Stefan Scholten took on that challenge with true conviction."

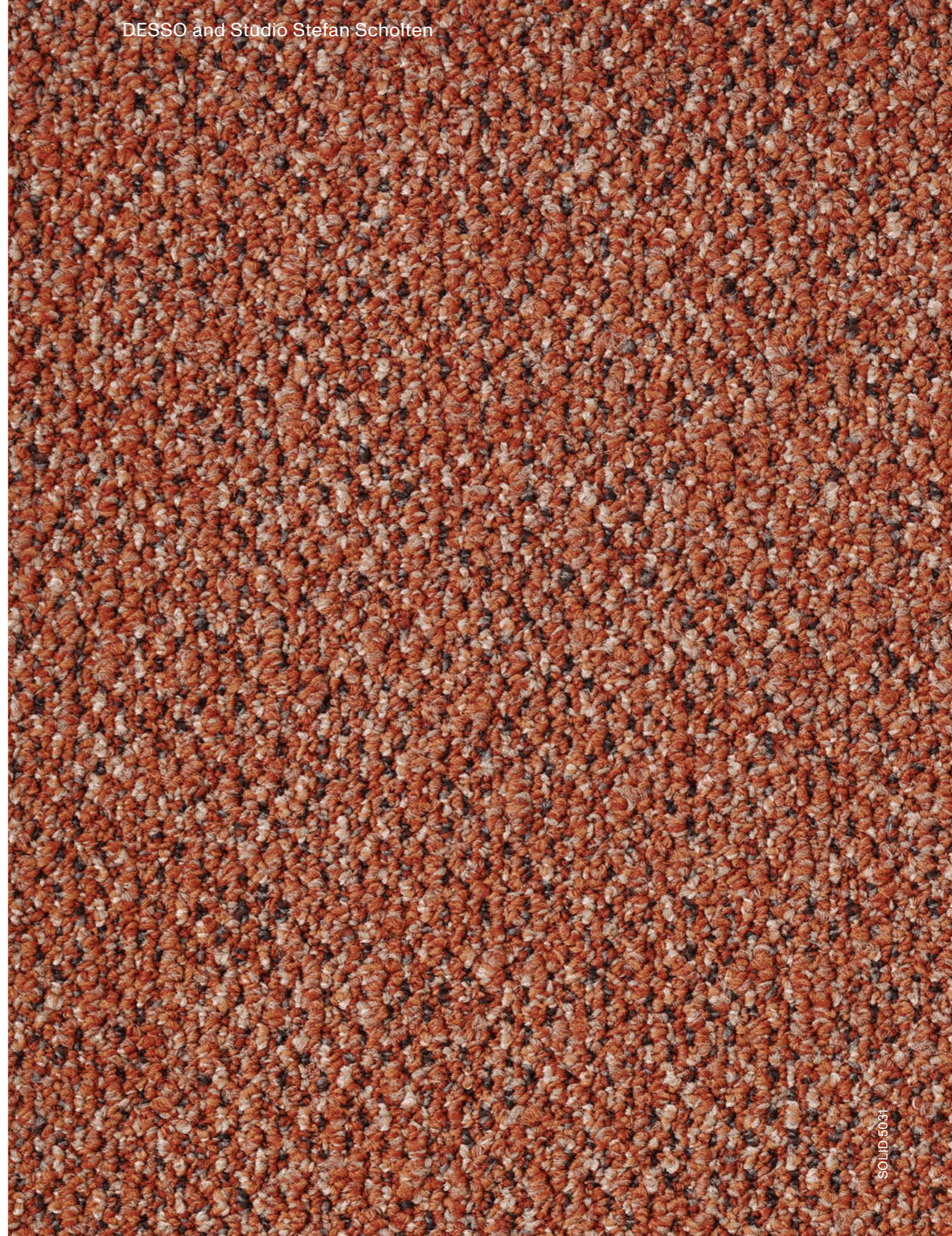




Stefan Scholten: "In the spirit of our first presentation book, we opted for this magazine-like inspiration book. It contains background information on the process and Tarkett's ambitious Cradle to Cradle philosophy. I believe this format has a longer shelf life."



SOLID 6324, SOLID 5031



SOLID 5031

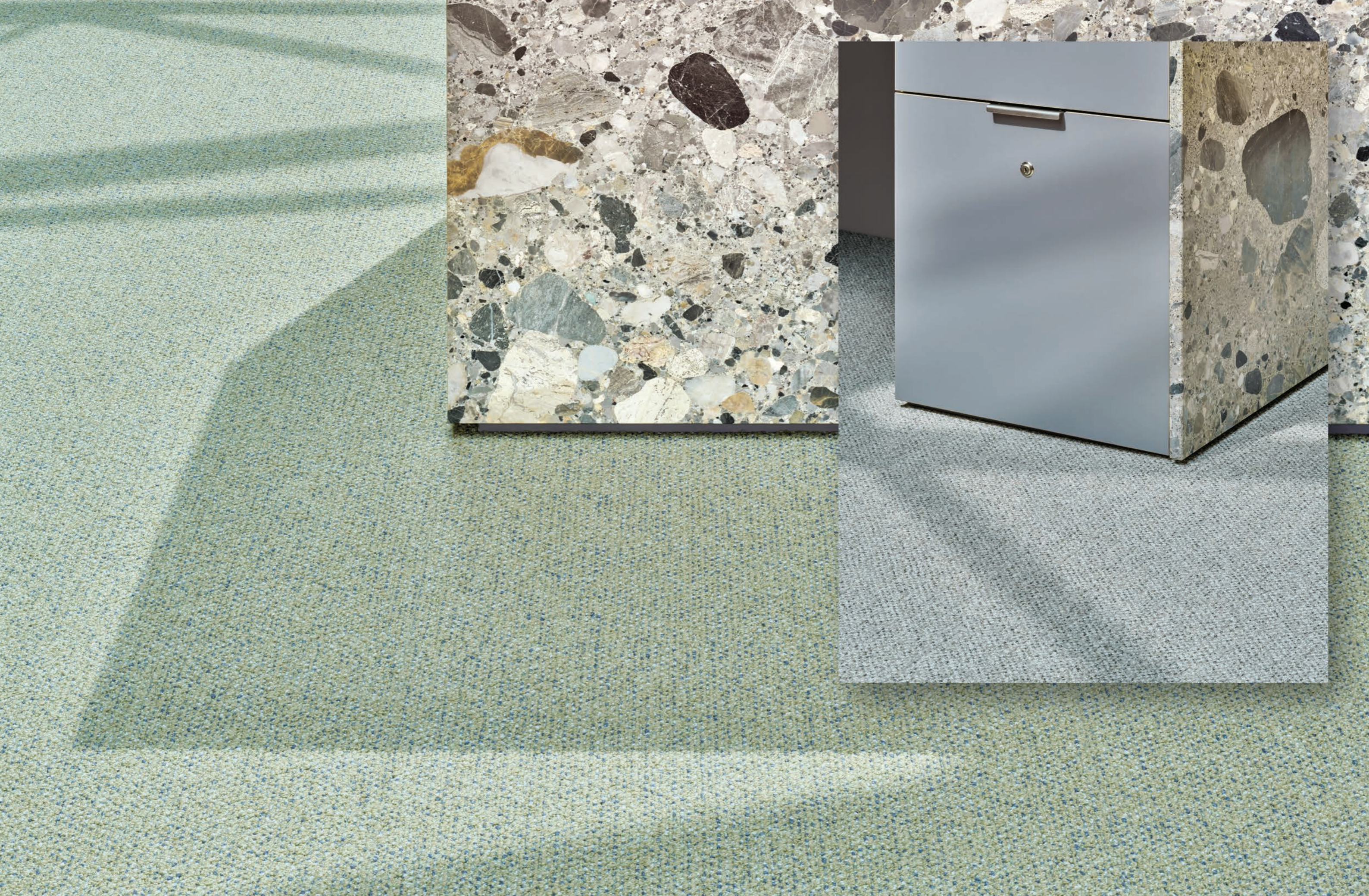


SHAPE 6324



THE
TACTILE NATURE
OF
THE TILES
SET
ALONGSIDE
ARCHITECTURAL
MATERIALS











PAGE 33

SOLID 6324

PAGE 34–35

SOLID 7854, 1321

PAGE 36–37

SHAPE 9027

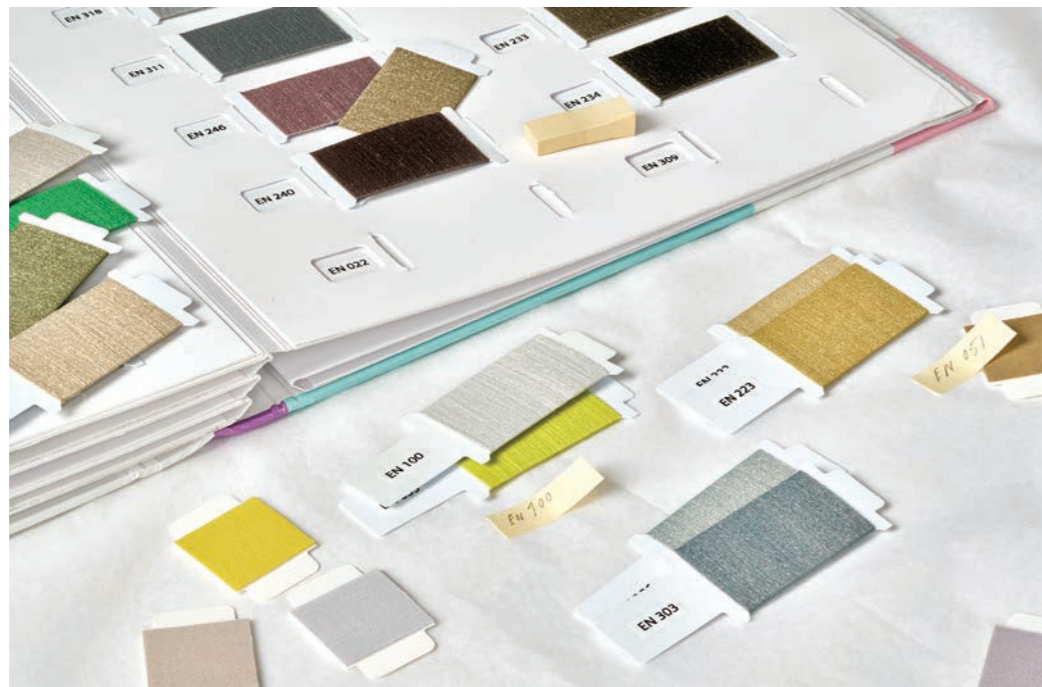
PAGE 38–39

SHAPE 2962, 9022

PAGE 40

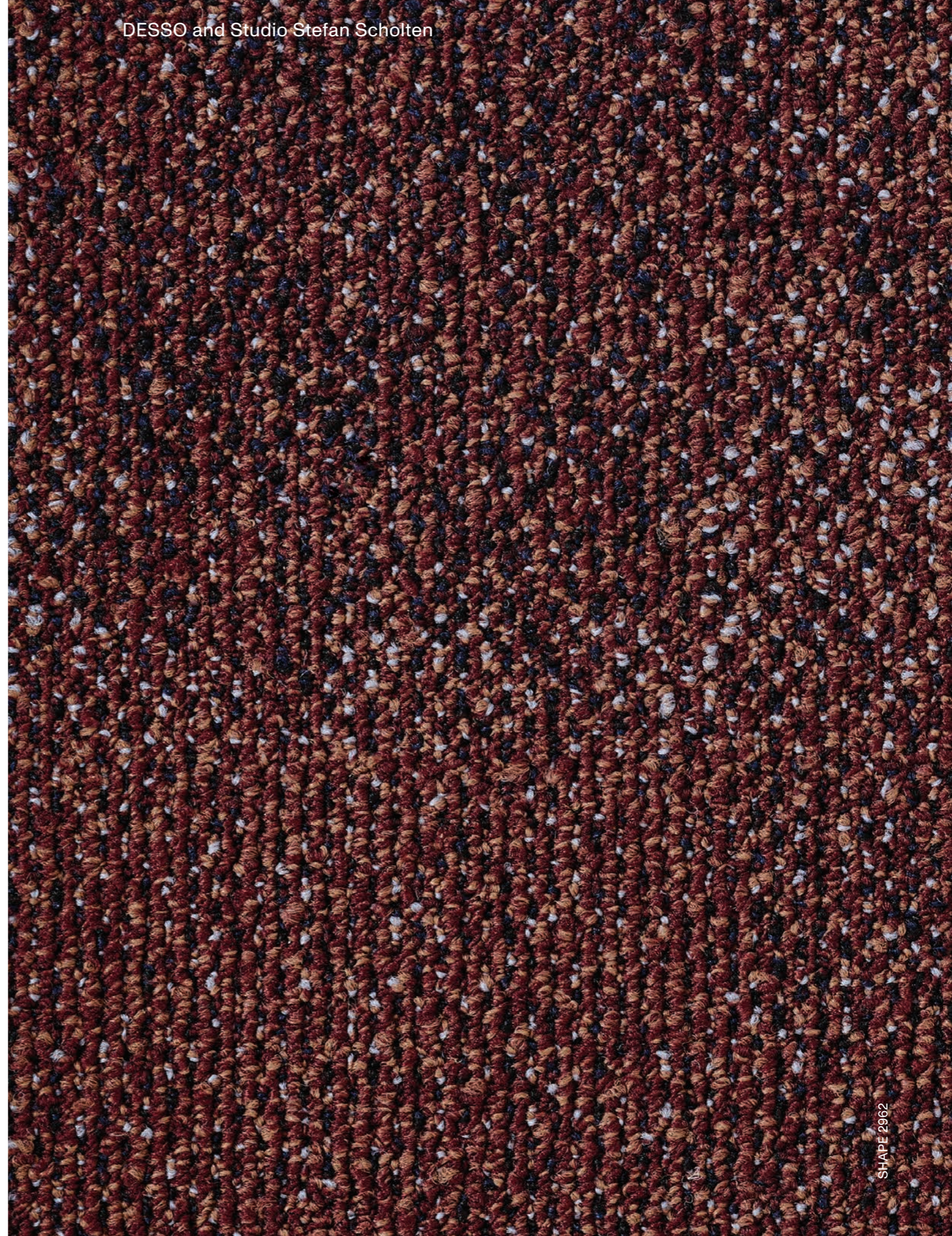
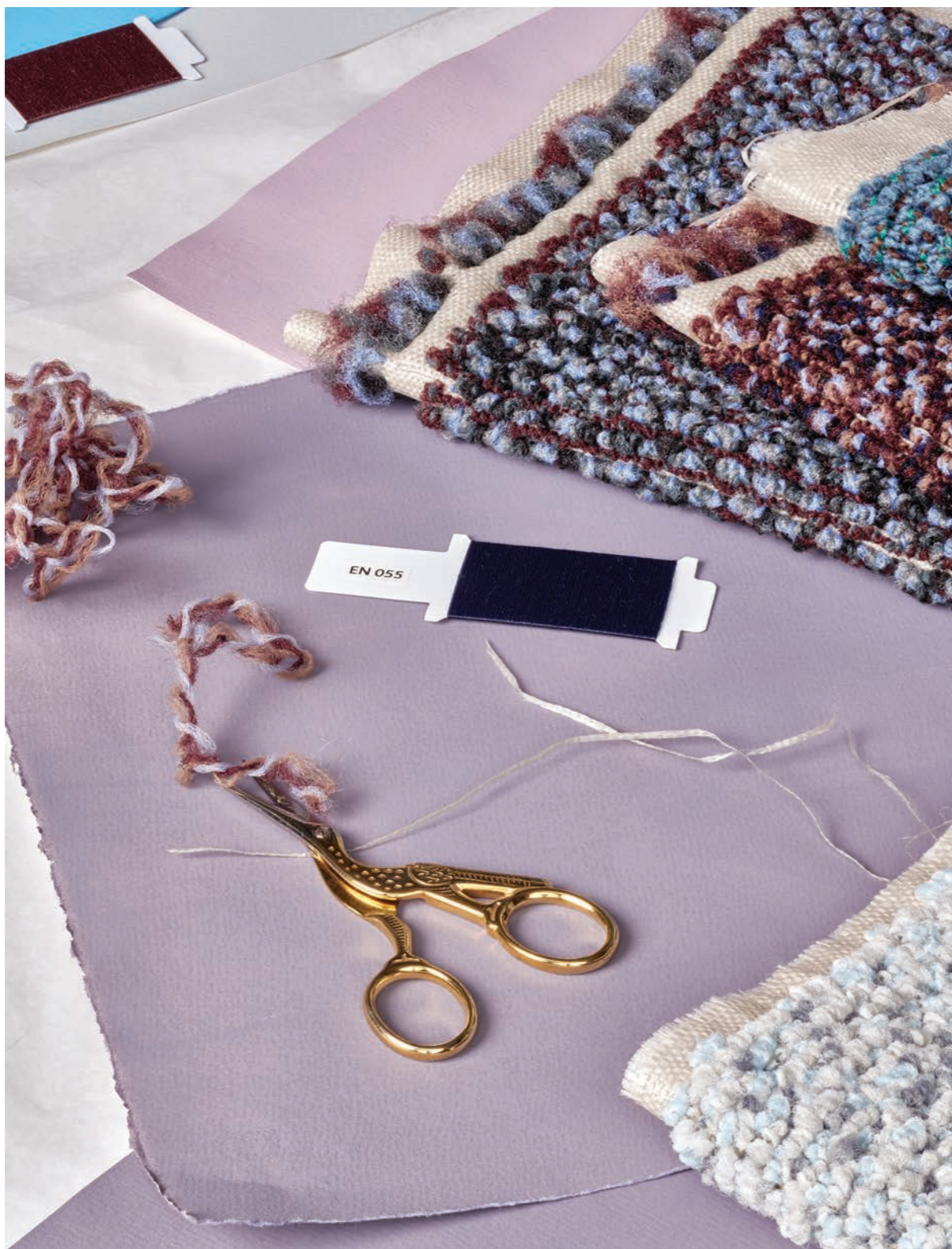
SOLID 5031, 9094





Ludwig Cammaert: "We used 100% regenerated nylon 6 yarn. Post-industrial, post-consumer material from our recycling centre, as well as fishing nets and old clothing material, form the basis for ECONYL® yarn from our supplier Aquafil."







↑ SOLID 9027

↓ SOLID 9022, SOLID 9027





Design Solid & Shape
Studio Stefan Scholten

Graphic design
Studio Stefan Scholten

Art direction
Studio Stefan Scholten

Photography
Pim Top

Text
Jack Meijers

Printing
Dekkers van Gerwen, 's-Hertogenbosch (NL)

Special thanks to
1616/ Arita Japan, Copray & Scholten, Gelderland, Karimoku
New Standard, Lensvelt, Moroso, Scholten & Baijings and Vitra.
Roamler for photographing (page 33–40) at their office in Amsterdam.



Descriptions, colours and specifications are subject to change without notice. Tarkett is not responsible for typographical/photographical errors. Actual product may differ from illustration.

All rights reserved.
Reproduction in whole or in part is prohibited without the prior written consent of the copyright owner.

The information presented in this document does not form part of any quotation or contract, is believed to be accurate and reliable and may be changed without notice. No liability will be accepted by the publisher for any consequence of its use. Publication thereof does not convey nor imply any license under patent- or other industrial or intellectual property rights. In case of doubt or differences of interpretation, the English version shall prevail over all other language versions.

Tarkett B.V.
Taxandriaweg 15
5142 PA Waalwijk
The Netherlands

+31 (0)416 684100
deso@tarkett.com
www.tarkett.com

Studio Stefan Scholten
Ruysdaelkade 2
1072 AG Amsterdam
The Netherlands

+31 (0)20 4208940
studio@stefanscholten.com
www.stefanscholten.com



