

Wood Bus

VINYL FLOORING

Designed to perform under tough conditions of high traffic areas, this safety flooring collection provides a durable solution that combines contemporary design with enhanced slip resistance.

High quality
transport
flooring

 **Tarkett**

Wood Bus Collection Colours

Traditional Oak Dark



26531 004

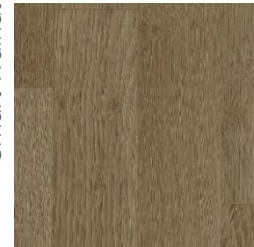
Traditional Oak Natural



26531 002



Trend Oak Smart Walnut



26531 016

Traditional Oak Mid Grey



26531 013

Trend Oak Natural



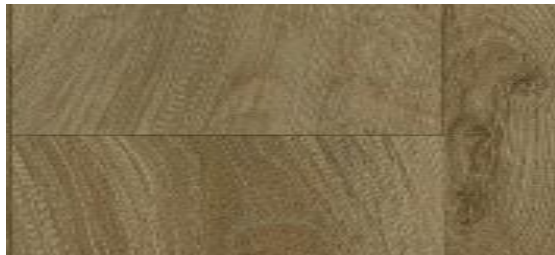
26531 006

Trend Oak White



26531 007

Traditional Oak Warm



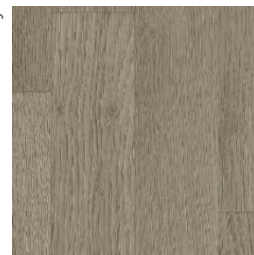
26531 014

Traditional Oak Mid Natural



26531 012

Trend Oak Steel Grey



26531 015

Traditional Oak Grey White



26531 011

Traditional Oak Light

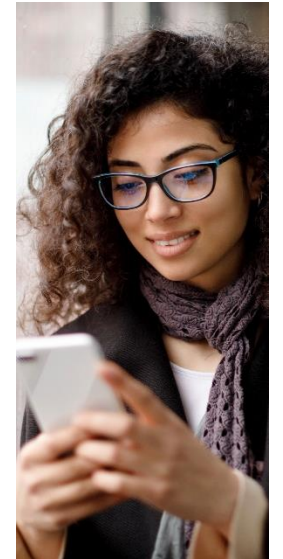


26531 001

Beech Natural



26531 009



Why Choose **Wood Bus**?



EXTREMELY DURABLE

Superior resistance to abrasion

This high quality resilient flooring sets new market standards in terms of surface volume loss.



ENHANCED SLIP RESISTANCE

R10 slip resistance

Our products are especially engineered to provide sustainable slip resistance throughout product life.



VARIETY OF DESIGN

Large selection of designs

We are able to match your requirements with our wide selection of designs and colours. For further design requirements we have a dedicated team of experts available to meet your specific needs.



CUSTOMISATION

Customized delivery

We can easily adapt to your internal processes by offering a choice in roll dimensions, pre-cut services or supporting with our floor plan layout service.

Wood Bus Technical specification

CLASSIFICATION	STANDARD	WOOD BUS
Type of floorcovering	EN 13845	PVC Floorcovering with particle enhanced slip resistance
TECHNICAL CHARACTERISTICS		
Total thickness	EN ISO 24346 (EN 428)	2.20 mm
Total weight	ISO 23997 (EN 430)	2500 g/m ²
Form of delivery	EN ISO 24341 (EN 426)	24 lm x 2 m (48m ²) 26531_--- (3 digit colour no.)
TECHNICAL PERFORMANCES		
Abrasion group	TABER ISO 9352	< 150 mg
	EN 13845 Annex D	≤10% particle loss after 50.000 cycles
Residual indentation	EN 660-2 remain	T ≤ 0.04 mm
	EN ISO 24343-1 (EN 433)	≤ 0.20 mm
Dimensional stability	EN ISO 23999 (EN 434)	≤ 0.10%
Sip resistance	DIN 51130	R10
	EN 13893	≥ 0.3
Phonic insulation	EN ISO 717/2	6 dB
Fire resistance	EC R118-3 (Annex 8: Vertical)	Pass
Low temp	RENAULT D42 1235/A	-25°C
Light fastness	EN ISO 105-B02	7
Chemical resistance	EN ISO 26987 (EN 423)	High resistance

High
quality
transport
flooring

October 2020